

# Retractor Bracket Assembly Instructions

**Parts Included** Please review the parts included to ensure you have all you need.



1 Retractor  
Bracket



2 A Hex bolts  
2 A Washers  
2 A Nuts



1 B Bolt



1

Stand the retractor next to the charger station to identify the needed height.

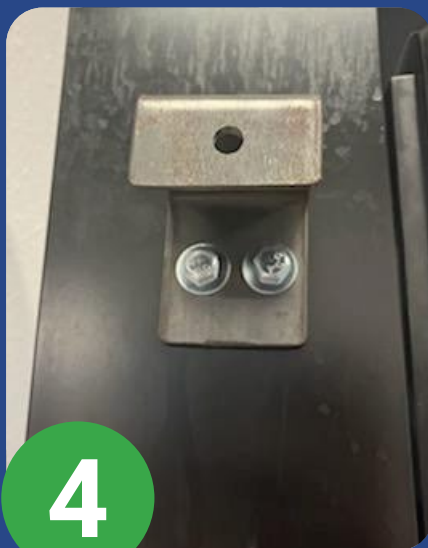


2

With the top of pedestal removed, measure down 6 inches and mark.

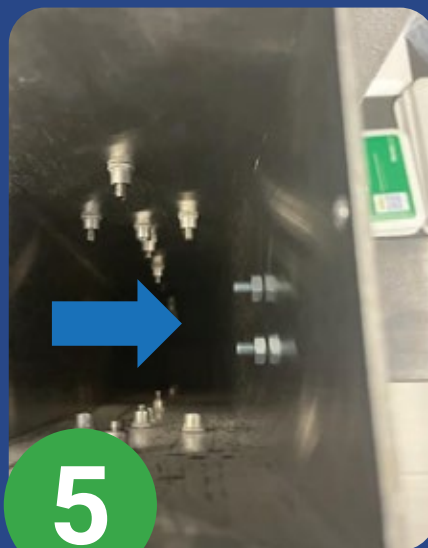
3

Using the bracket as a template, mark and drill two (2) 5/16" holes. Make sure the bracket is level during this step. Top of bracket should be lined up with mark from step 2.



4

Secure pedestal side of bracket with Bolts washers and nuts (A).



5

Tighten the nut on inside of charger pedestal.



6

Secure bolt (B) into the retractor. Bolt should go through the bracket, retractor collar, and snug up against the retractor itself.



**Note:** Please refer to the instructions inside the retractor box to complete the assembly.